

passing ⁶ and ⁶/₄ chords

Name: _____

Tonic:

I home
 I^6 "soft" home
 iii in major substitute for I^6

Dominant:

V leads back to home
 V^7 good for authentic cadences, not half cadences
 V^6 , V^7 / vii^{o7} (inv) "soft" dominants
 cad. ⁶/₄ cadential V with nonharmonics
 V^{6-5} [iii^6] cadential V with a nonharmonic in major - "Chopin 6th"

Passing noodles between bookends of tonic:

V^6
 V^6_4 , vii^{o6}
 V^7 / vii^{o7} (inv)
 IV + inv

Predominants:

$ii^{(6)}$, IV
 IV^6 min: Phrygian cadence; maj: bass $\hat{1}-\hat{6}-\hat{7}-\hat{1}$
 ii^7 / IV^7 (and inv)
 vi also...deceptive cadence

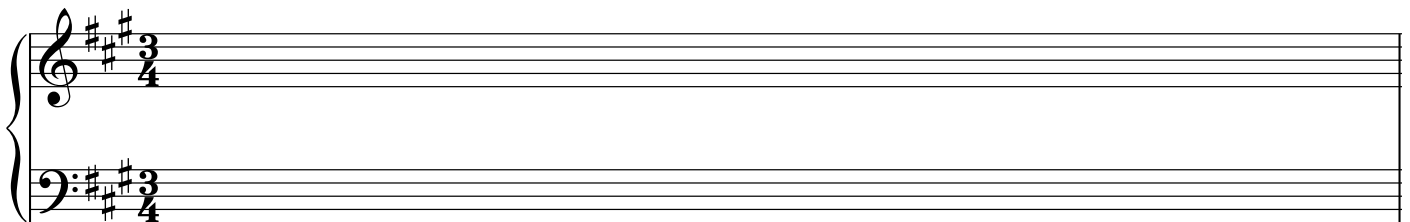
Other passing chords:

passing ⁶/₄ or ⁶/₄ the passing noodle between ⁵/₃ and ⁶/₄ bookends of any chord
 iii^6 in major bass $\hat{1}-\hat{7}-\hat{6}-\hat{5}$; passes between I and predom on $\hat{6}$

Skip the tonic expansion if you want; you have to **expand two other chords somewhere**.

At least one of the two passing chord "noodles" must be first inversion, ⁶/₄ instead of ⁶/₄. It's the harder one to voice lead, so you need practice doing it.

Cadences are up to you.



A:

