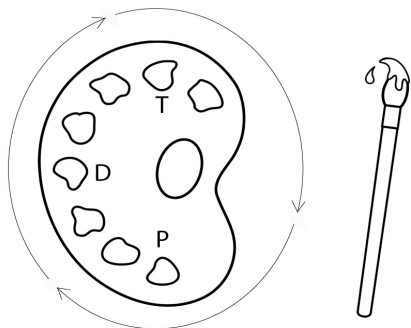


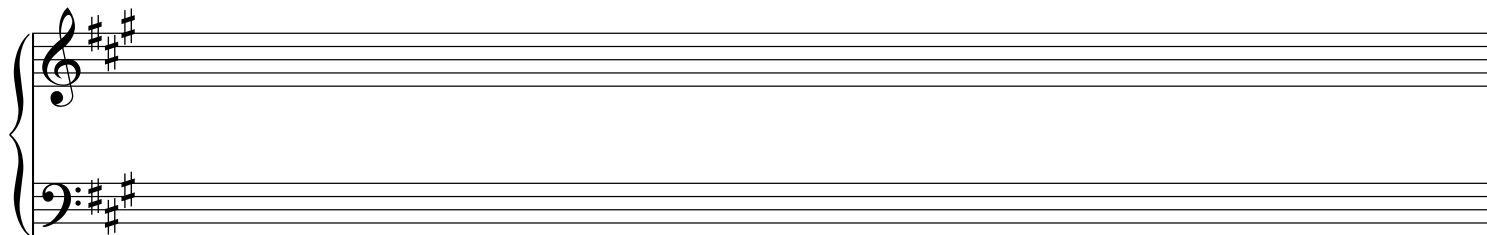
Reviewing your artist's palette: grouping chords by function

Every sentence you ever make will have the same cycle of grammar: | : tonic > predominant > dominant : |
It's like you have an artist's palette like the one shown.
You have to know which colors fit in the tonic, predominant, and dominant areas of your palette.
As you paint, you select colors from each group and keep the cycle moving around in order.
Round and round you go until your composition is complete.

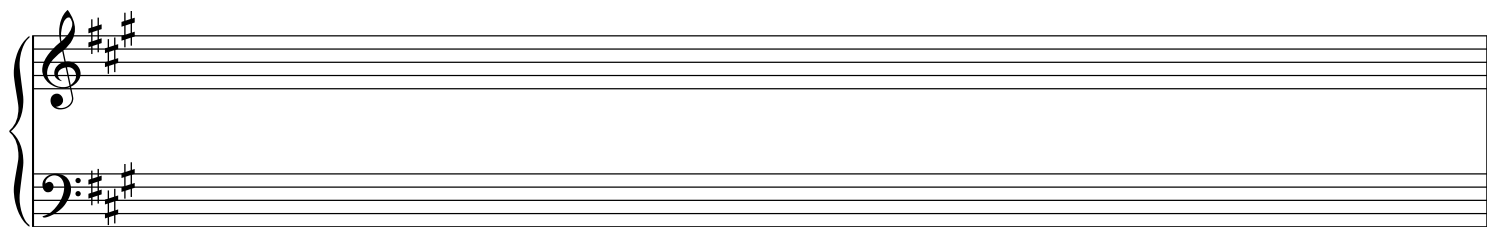
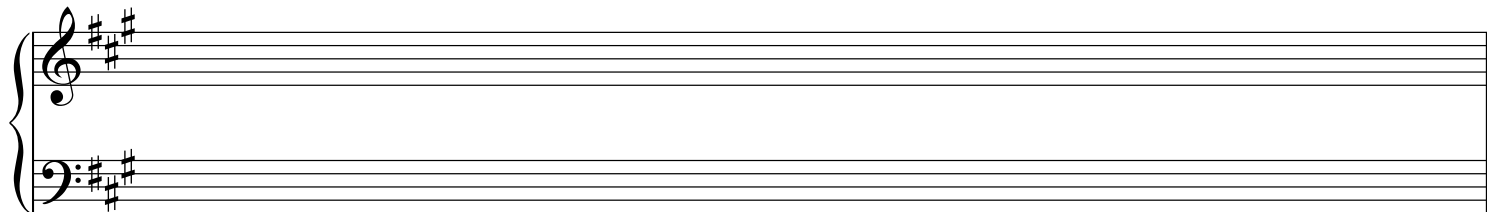


To review, list every chord you learned that fits in each category, and use these chords to create "bass shapes" on the staves provided.

Tonic:

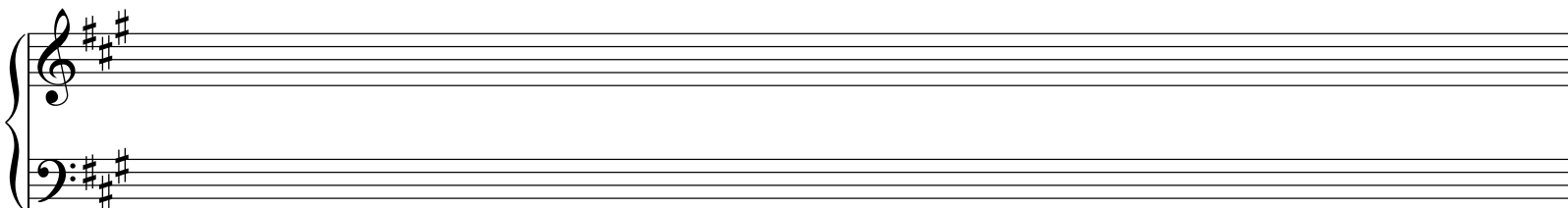


Passing noodles between bookends of tonic:

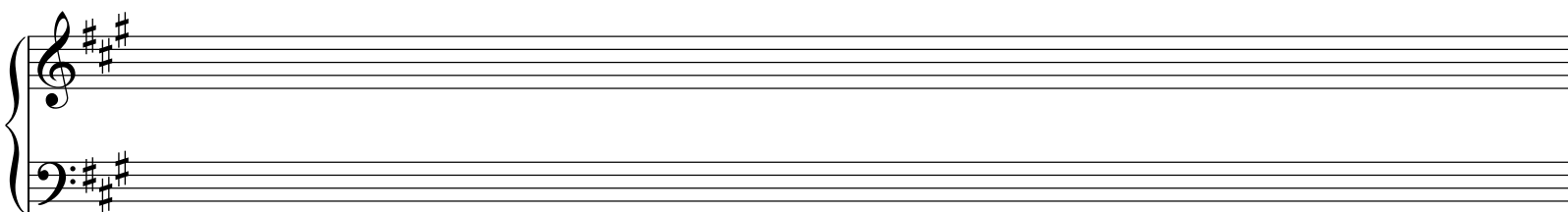


Predominants:

Dominant:

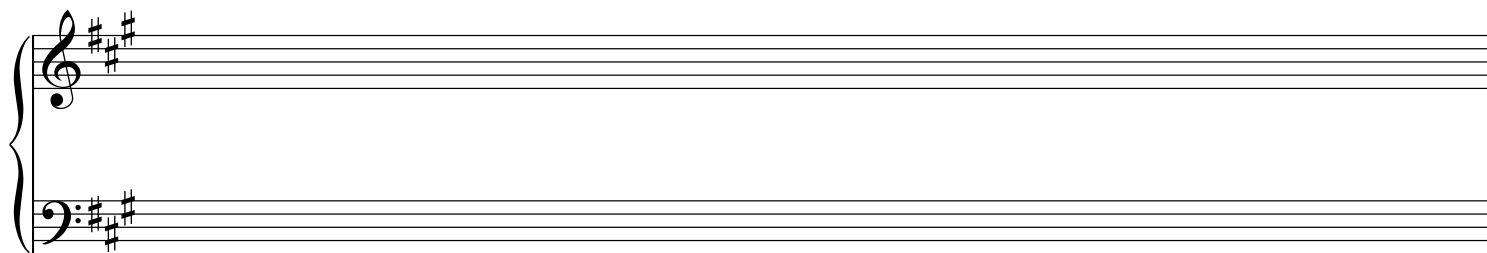


A musical staff system consisting of two staves. The top staff has a treble clef and the bottom staff has a bass clef. Both staves have a key signature of three sharps (F#, C#, G#). The staves are empty, with no notes or rests written on them.

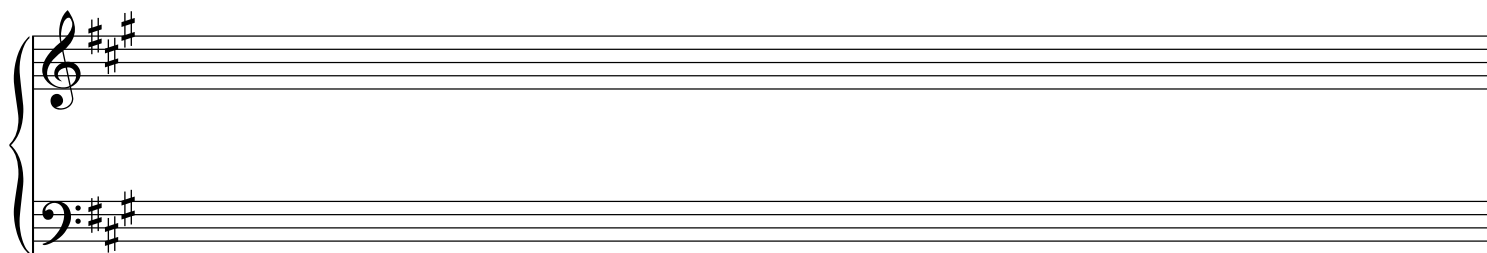


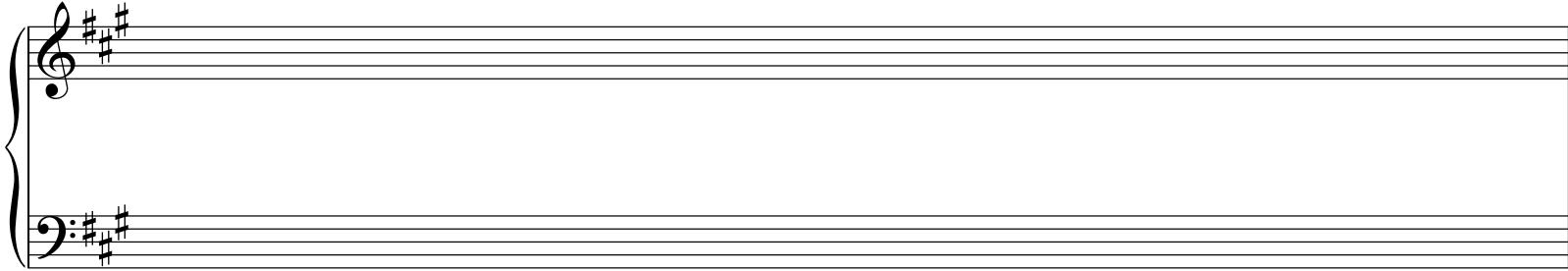
A musical staff system consisting of two staves. The top staff has a treble clef and the bottom staff has a bass clef. Both staves have a key signature of three sharps (F#, C#, G#). The staves are empty, with no notes or rests written on them.

Passing chords between 1st and 2nd inversion bookends of anything:



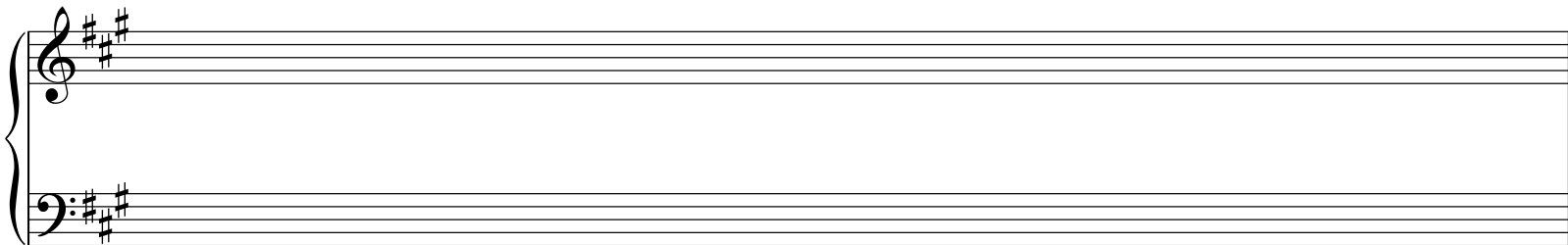
The "meow mix" bassline in major: $\hat{1} - \hat{7} - \hat{6} - \hat{5}$



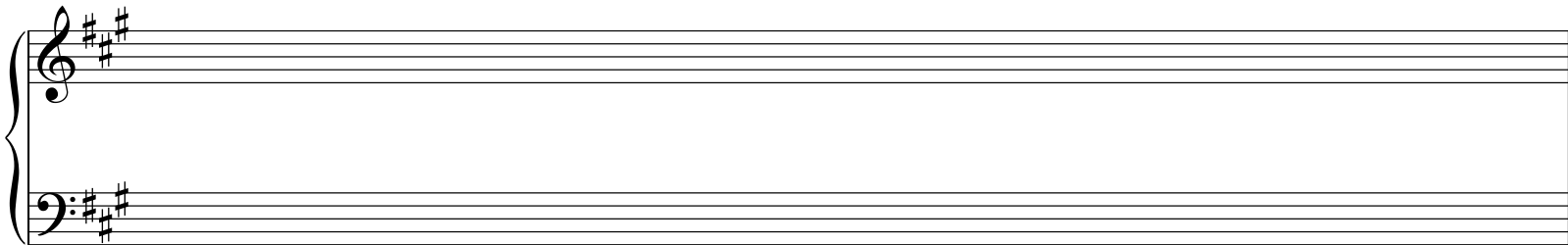


A blank grand staff consisting of two five-line staves. The top staff has a treble clef and the bottom staff has a bass clef. Both staves have a key signature of three sharps (F#, C#, G#).

Typical Sequences:



A blank grand staff consisting of two five-line staves. The top staff has a treble clef and the bottom staff has a bass clef. Both staves have a key signature of three sharps (F#, C#, G#).



A blank grand staff consisting of two five-line staves. The top staff has a treble clef and the bottom staff has a bass clef. Both staves have a key signature of three sharps (F#, C#, G#).